



U.S. STAMPS

of Chris Calle



THE U.S. STAMPS OF CHRIS CALLE

Christopher Calle became interested in art at a very early age. He often went with his father, artist and stamp designer Paul Calle, to observe and sketch nature. He soon enrolled in art classes at a local nature center where he and his brother were volunteers. Chris was soon drawing and painting the animals he observed and anything he could imagine. His interest in stamps began in 1969, when Neil Armstrong walked on the Moon. It was a pivotal event for all of America, but — for an eight-year-old boy who knew the Apollo XI astronauts also carried the die that would be used to print his father's First Man on the Moon stamp — it was amazing.

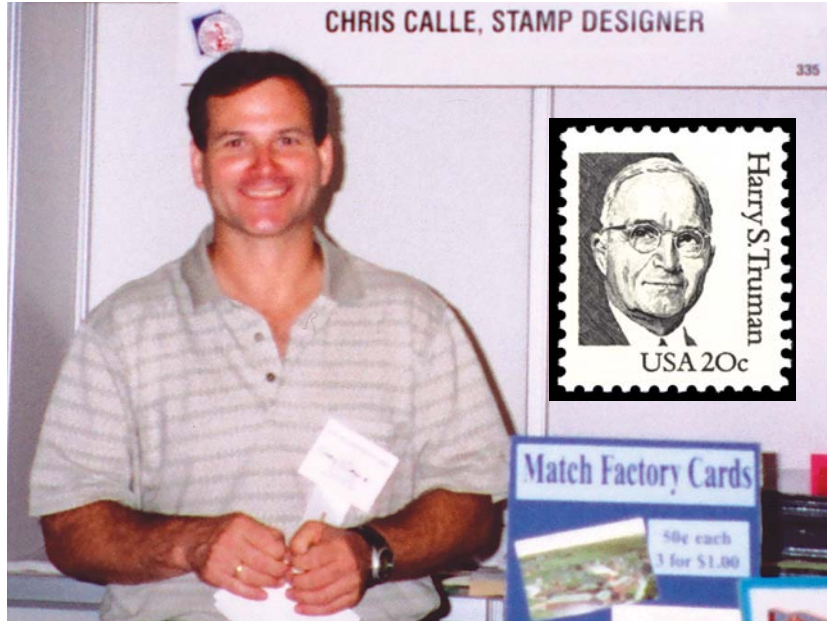
The landing made an indelible mark on his life and future career. Chris began collecting First Day Covers of that 10-cent air mail issue, which is still his major collecting interest. His first FDC cachet drawing is from 1969 and depicts Armstrong and Aldrin on the Moon. His interest in art continued in college, where he earned a BFA at the University of Michigan School of Fine Art in 1983, majoring in illustration.

One of his first professional assignments was the Harry S. Truman stamp in the Great Americans series. In the next 12 years, Chris designed over 30 U.S. stamps, and hundreds more for entities as diverse as Sweden, Marshall Islands, and the United Nations. And over nearly two decades, Chris produced more than 1,000 Fleetwood FDC cachet paintings. Perhaps most gratifying for Chris was designing the 1989 \$2.40 Priority Mail 20th Anniversary Moon Landing stamp, and then jointly designing two stamps in 1994 for the 25th Anniversary of the Moon Landing with his father.

A stamp artist's work may be the most reproduced artwork in the world. More than 150 million 1969 First Man on the Moon air mail stamps were printed, and there were half a billion stamps printed with the design of Chris's 10-cent Eagle and Shield definitives in 1991-93.

Chris has generously donated cachets to the American Philatelic Society for the last several years, and in 2006 started his own line of FDCs as a cachetmaker. Chris has introduced his seven-year-old son Ian to the fun of philately and Ian has been busy following in the footsteps of father Chris and grandfather Paul in designing First Day Cover cachets.

Paul remains a key source of inspiration and knowledge, and father and son share a studio in Connecticut. Chris also has followed his father's path to Western Art, painting and drawing the Mountain Men and Indians who inhabited the vastness of the American West. At StampShow 2008, Marshall Islands is releasing Chris's latest work — a 16-stamp Portraits of the Wild West pane.



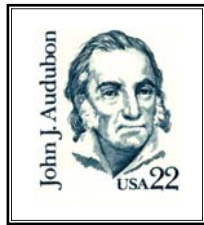
A beaming Chris Calle at the American Philatelic Society's booth at StampShow. An inset shows his first U.S. design: the 1984 20-cent Harry S. Truman definitive in the Great Americans series.



In addition to designing U.S. and foreign stamps and cachets for first-day covers, Chris Calle's award-winning exhibit "Celebrating the 25th Anniversary of the Man on the Moon" is always one of the most popular.



GREAT AMERICANS BY CHRIS CALLE



1985 22c
John J. Audubon
Wildlife Artist



1984 20c
Harry S. Truman
U.S. President



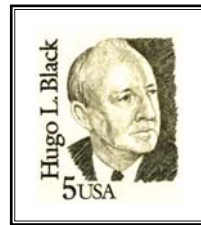
1985 50c
Chester W. Nimitz
Fleet Admiral



1986 3c
Paul Dudley White MD
Father of Preventive Cardiology



1986 4c
Father Edward J. Flanagan
Founder of Boy's Town



1986 5c
Hugo L. Black
Supreme Court Justice



1986 17c
Belva Ann Lockwood
Attorney & Suffragist



1988 65c
H.H. 'Hap' Arnold
General of the Air Force



1990 40c
Claire Chennault
'Flying Tigers' Commander



1991 35c
Dennis Chavez
Senator



1992 29c
Earl Warren
Supreme Court Chief Justice



1992 75c
Wendell Willkie
Statesman, Presidential Nominee



1993 29c
Thomas Jefferson
Founding Father, President



1995 55c
Alice Hamilton MD
Social Reformer



1995 78c
Alice Paul
Suffragist Leader



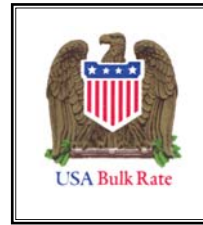
1998 77c
Mary Breckenridge
Founder, Frontier Nursing Service



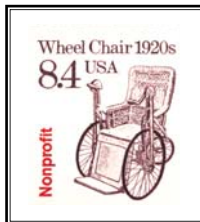
COILS, CONNECTIONS, CONNECTICUT



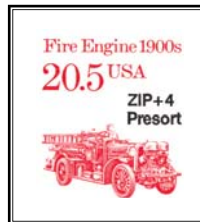
1991 (10c)
Eagle & Shield
"Bulk Rate USA"



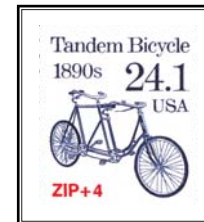
1993 (10c)
Eagle & Shield
"USA Bulk Rate"



1988 8.4c
Wheel Chair 1920s
"Nonprofit"



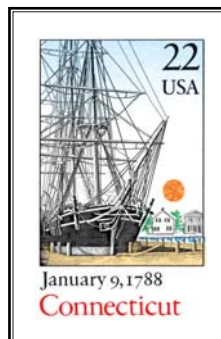
1988 20.5c
Fire Engine 1900s
"ZIP+4 Presort"



1988 24.1c
Tandem Bicycle 1890s
"ZIP+4"



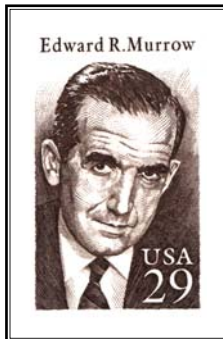
1993 29c + 29c
Recognizing Deafness / American Sign Language
"I Love You" se-tenant issue



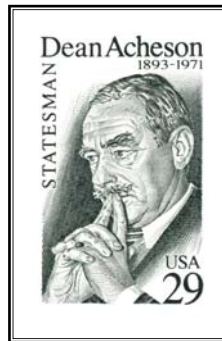
1988 22c
Connecticut Statehood
Bicentennial



MORE OF THE MANY FACES OF CHRIS CALLE



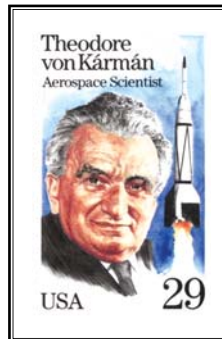
1994 29c
Edward R. Murrow
Broadcast Journalist



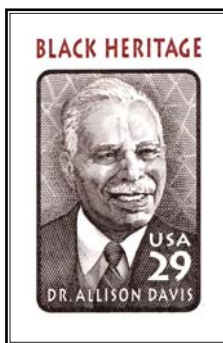
1993 29c
Dean Acheson
Statesman



1994 29c
George Meany
Labor Leader



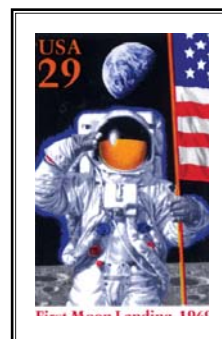
1992 29c
Theodore von Kármán
Aerospace Scientist



1994 29c
Dr. Allison Davis
Social Critic & Educator



1995 32c
Bessie Coleman
Pioneer Aviator



1994 29c
Moon Landing
25th Anniversary



OTHER CHRIS CALLE COLLECTIBLES



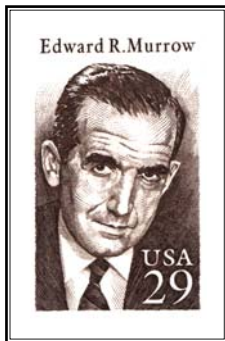
Chris Calle
Stamp Designer

Over the past quarter century, Chris Calle has designed more than 30 stamps for the U.S. Postal Service, and hundreds more for stamp-issuing entities as diverse and far-flung as Sweden, the Marshall Islands, and the United Nations. And in the 40 years since 1968, Chris has produced countless cachets for U.S. and foreign First Day Covers, including more than 1,000 paintings for Fleetwood FDC cachets alone.

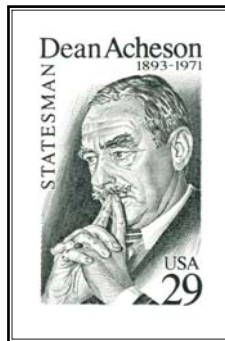
You can collect Chris Calle's autograph and add other collectibles, including FDCs and the 2008 Marshall Island Portraits of the Wild West stamps, to this page.



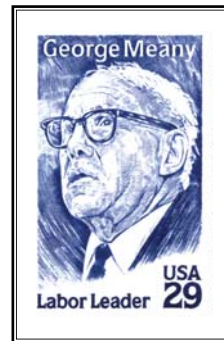
MORE OF THE MANY FACES OF CHRIS CALLE



1994 29c
Edward R. Murrow
Broadcast Journalist



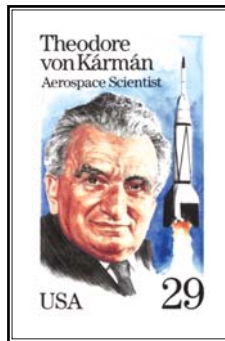
1993 29c
Dean Acheson
Statesman



1994 29c
George Meany
Labor Leader



1994 29c
Dr. Allison Davis
Social Critic & Educator



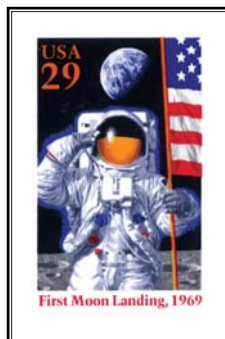
1992 29c
Theodore von Kármán
Aerospace Scientist



1995 32c
Bessie Coleman
Pioneer Aviator



1989 \$2.40
Moon Landing
20th Anniversary



1994 29c
Moon Landing
25th Anniversary



1994 \$9.95
Moon Landing
25th Anniversary

Both the 1994 Moon Landing 25th Anniversary stamps were designed jointly by Chris Calle and Paul Calle



AMERISTAMP EXPO/TEXPEX

FEBRUARY 20-22, 2009 — ARLINGTON, TEXAS



Admission is free to AMERISTAMP EXPO/TEXPEX, winter show of the American Philatelic Society, hosted by TEXPEX and coming to the Arlington Convention Center February 20–22. Whether you're eight or 80, learn the ins and outs of one of the world's greatest hobbies. Thousand pages of stamp exhibits will be shown, plus world-class rarities and priceless historical mail. Well over 100 dealers from the U.S. and abroad will have everything you need to pursue the stamp hobby, with helpful seminars and how-to sessions catering to interests of every kind. If you have an old collection, "Stamps in Your Attic" will give free thumbnail evaluations of what you've got throughout the show, sponsored by the National Stamp Dealers Association. AMERISTAMP EXPO 2009/TEXPEX will be open Friday and Saturday from 10 to 6, and Sunday from 10 to 4.

To learn more, visit www.stamps.org/Ameristamp/intro.htm

THE AMERICAN PHILATELIC SOCIETY

The stamps illustrated in this album are shown courtesy the American Philatelic Society Reference Collection, created and sustained through the generosity of APS members. With nearly 40,000 members in more than 110 countries, the 122-year-old American Philatelic Society is the largest, nonprofit society for stamp collectors in the free world. The APS offers services and educational opportunities to broaden your enjoyment of the hobby and enhance your special collecting interests, whatever they may be. The APS is supported entirely by membership dues, gifts, and the sale of its publications and services.



Visit us online at www.stamps.org

YOUNG STAMP COLLECTORS OF AMERICA



Young Stamp Collectors of America is a new club for collectors, under 18. Whether you are new to the hobby or have collected for several years, the YSCA offers a variety of ways to make your collecting more fun. As a member you will receive the YSCA e-newsletter, special low prices on selected collecting supplies, an exciting website with online support via e-mail, and a monthly e-meeting. Twice a year meetings will be held during APS StampShow and AmeriStamp Expo. Join now to receive a treasure package including a First Day Cover, a packet of stamps, informative material, and other freebies. Members attending any of the meetings will receive philatelic souvenirs of the meeting and be eligible for prizes.

Visit Young Stamp Collectors of America online at www.stamps.org/ysca/intro.htm



PORTRAITS OF THE WILD WEST

Marshall Islands — 2008

