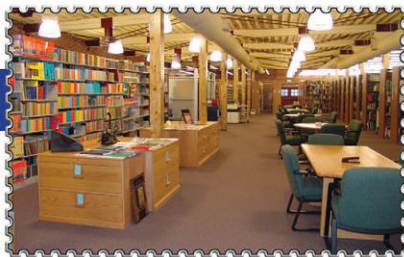




www.stamplibrary.org

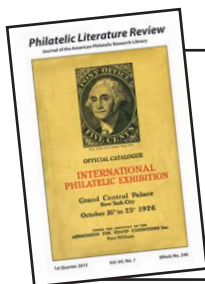


Features

- President's Message — *Roger Brody* 3
From the Librarian's Desk
— *Tara Murray* 7
Library News — *Sergio Lugo* 9
Who Really Founded the American
Philatelic Society, Theodore F.
Cuno or Schuyler B. Bradt?
— *Brian Birch* 18
What's on Your Bookshelf?
— *Steve Zwilling* 28
Postal History Symposium 30

Departments

- About the Cover 17
APRL New Acquisitions 32
Book Reviews 54
Collectors Club of Chicago
Pratt Award 62
How Can I Use the Library? 80
Index of Advertisers 12
Literature Palmares — CHICAGOPEX 14
New Books Noted 63
Philatelic Literature Clearinghouse 64
Philatelic Literature Contributors 27
PLR Dealer Directory 78



Read the PLR
online at
www.stamps.org/
Quarterly-Journal

Philatelic Literature Review

Journal of the American Philatelic
Research Library

100 Match Factory Place
Bellefonte, PA 16823
Phone: 814-933-3803
Fax: 814-933-6128
plrarticle@stamps.org

Editor

Jay Bigalke • jbigalke@stamps.org
814-933-3803, ext. 221

Graphic Designer

Doris Wilson • doris@stamps.org

Associate Editors

Bonny Farmer • bfarmer@stamps.org
Tara Murray • tmurray@stamps.org

Columnists

Sergio Lugo • lugopspe@q.com

Librarian

Tara Murray • tmurray@stamps.org

PLR Advertising

Helen Bruno • adsales@stamps.org
814-933-3803, ext. 224

©American Philatelic
Research Library, 2015

Philatelic Literature Review (USPS 928-660, ISSN-0270-1707) is published quarterly by the American Philatelic Research Library, Inc. (APRL). Telephone: 814-933-3803; Fax: 814-933-6128; E-mail: plr@stamps.org; Website: www.StampLibrary.org.

Postmaster: send address changes to the APRL, 100 Match Factory Place, Bellefonte, PA 16823. Periodicals postage paid at Bellefonte, PA 16823, and additional entry offices.

Annual subscription rates: \$18, regular members; \$30, sustaining members; and \$50, contributing members. Libraries and institutions, \$30. Single copy price, \$5.