



# The Use of Point Scores to Evaluate Exhibits

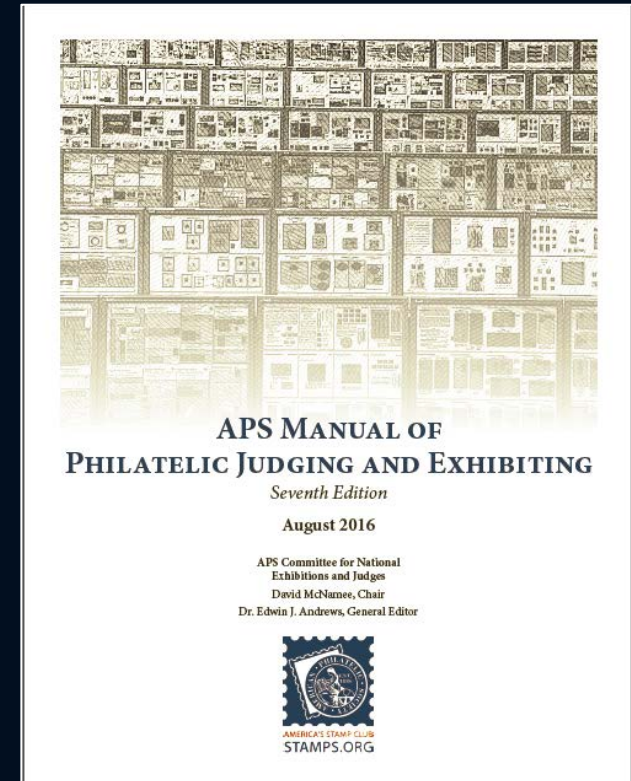
APS COMMITTEE ON ACCREDITATION OF NATIONAL  
EXHIBITIONS AND JUDGES  
AMERICAN ASSOCIATION OF PHILATELIC EXHIBITORS

# Sign in Sheet

- Complete sign in sheet for record of attendance.
- Handouts provided
  - New EEF from 7<sup>th</sup> edition Manual, available on APS website.
  - New EEF for Youth from 7<sup>th</sup> edition Manual, also available on APS website.
  - Seminar Summary Sheet with details of the judges' check list for evaluation criteria (7<sup>th</sup> edition Manual, p. 28).

# 1. Purpose of Seminar

- Review *7<sup>th</sup> Edition, APS Manual of Philatelic Judging and Exhibiting*
- Review and discuss:
  - Changes to Manual
  - Use and advantages of points
  - Translation of points to meaningful feedback
  - Procedures for judging using points



## 2. 7<sup>th</sup> Edition of the Manual

- Two year effort involving 57 judges and exhibitors
- Public comment period provided additional input
- Final edition approved by APS Board August 2016
- Effective January 1, 2017

## 3. Changes to Manual

- Name now includes “Exhibiting”
- All exhibits assessed using EEF big 4 criteria
- Appendices provide suggested treatment outlines and typical content for exhibit types – these are not rules
- Divisions eliminated, 4 classes remain
  - General Class (all multi-frame exhibits regardless of type)
  - One Frame Class
  - Youth Class
  - Literature Class

### 3. Changes to Manual (continued )

- Picture Postcards now part of One Frame, General or Youth Classes
- Experimental Exhibits (older special studies) described
- Topical Exhibits described
- Point scoring introduced
- New medal levels introduced (5 to 8), now including:
  - Large Silver
  - Large Vermeil
  - Large Gold
- *Rules for Shows* and *Philatelic Literature Judging* chapters removed to their own dedicated Manuals.

## 4. Changes to EEF and Youth Evaluation Forms

- Percentages become points
- Point ranges reflect new medal levels
- Special point situations for thematic, topical and display exhibits
- Youth EEF point ranges reflect new medal levels

## 5. Advantages of Points

- More detailed focus on deficient areas
- More specific recommendations for improvement by EEF criteria
- Better overall feedback for exhibitors
- Aids jury in deliberations for special awards



## 6. Review of Point Breakdown

Old Medal Levels	Old Point Range	New Medal Levels	New Point Range
		<b>Large Gold</b>	<b>90-100</b>
Gold	85-100	Gold	85-89
		<b>Large Vermeil</b>	<b>80-84</b>
Vermeil	75-84	Vermeil	75-79
		<b>Large Silver</b>	<b>70-74</b>
Silver	65-74	Silver	65-69
Silver Bronze	60-64	Silver Bronze	60-64
Bronze	55-59	Bronze	55-59
Certificate	0-54	Certificate	0-54

## 6. Review of Point Breakdown (continued )

- Review Seminar Summary Sheet
- Note the order of evaluation is different from the standard EEF
- Best order to use for scoring
  - Presentation, Treatment, Knowledge, Rarity/Condition, Importance
- Why do Importance last?
  - The exhibit subject can best be evaluated after considering the entirety.
  - Thematic, display and topical exhibits are weighted on the exhibit itself.

## 6. Review of Point Breakdown (continued)

- Point score in one criterion does not equate to the same point score in other criteria (e.g., silver treatment but gold knowledge)

**The Effect of Criteria Points on Overall Score**

Medal	Certificate	Bronze	Silver Bronze	Silver	Large Silver	Vermeil	Large Vermeil	Gold	Large Gold
<b>Point Range</b>	0-54	55-59	60-64	65-69	70-74	75-79	80-84	85-89	90-100
<b>Treatment 20</b>	0-10	11	12	13	14	15	16	17	18-20
<b>Importance 10</b>	0-5	6	6	7	7	8	8	8	9-10
<b>Knowledge 25</b>	0-12	13-14	15	16	17-18	18-19	20	21-22	23-25
<b>Research 10</b>	0-5	6	6	7	7	8	8	8	9-10
<b>Rarity 20</b>	0-10	11	12	13	14	15	16	17	18-20
<b>Condition 10</b>	0-5	6	6	7	7	8	8	8	9-10
<b>Presentation 5</b>	0-2	3	3	3	3	4	4	4	5

## 6. Review of Point Breakdown (continued )

- Start high or low?
  - Chief and jury will decide process at each show.
  - If choice is to start with highest points, reduce only as required by deficiencies that can be clearly articulated as feedback (EEF and oral).
  - If choice is to start in middle or low then increase only as can be defended by clear reasoning.
  - Any point added or removed should be easily supported by fact.

# 7. Judges' Checklist for Pointing

- All judges should be knowledgeable of detailed criteria and the judges' check list (Manual p. 28)
- **Presentation = 5 points**
  - No distractions to interfere with treatment
  - Visually interesting/attractive
  - What % of **Presentation** does each point represent?

0-1 -100% to -80%	2 -60%	3 -40%	4 -20%	5 - 0%
----------------------	-----------	-----------	-----------	-----------

## 7. Judges' Checklist for Pointing (continued)

- **Treatment** = 20 points
  - Unambiguous title
  - Purpose/intent/scope limitations
  - Plan/statement/ organizing structure
  - Logical/ balanced development by plan
  - For One Frame Class consider "fit"
  - What % of **Treatment** does each point represent?

0-10	11	12	13	14	15	16	17	18	19	20
-100% to -50%	-45%	-40%	-35%	-30%	-25%	-20%	-15%	-10%	-5%	-0%

## 7. Judges' Checklist for Pointing (continued)

- **Knowledge = 25 points**
  - Items necessary/ sufficient for treatment
  - Accurate, complete and concise descriptions
  - Accurate analyses and logical conclusions
  - Key items are originals (no scans/copies)
  - Thematic/Topical = philatelic/thematic/topical (element choice) + subject knowledge
  - Display = subject knowledge (balance, element choice) + philatelic, deltiology/ephemera knowledge
  - What % of **Knowledge** does each point represent?

0-12	13	14	15	16	17	18	19	20	21	22	23	24	25
-100% to -47%	-48%	-44%	-40%	-36%	-32%	-28%	-24%	-20%	-16%	-12%	-8%	-4%	-0%

## 7. Judges' Checklist for Pointing (continued)

- **Research and Personal Study = 10 points**
  - Evidence of significant personal study, or
  - Evidence of original research
  - Thematic exhibits combine knowledge + research/personal study as combined maximum 35 points divided equally
    - 17 ½ points = philatelic knowledge
    - 17 ½ points = subject knowledge
  - What % of **Res/Pers. Study** does each point represent?

0-5 -100% to -50%	6 -40%	7 -30%	8 -20%	9 -10%	10 -0%
----------------------	-----------	-----------	-----------	-----------	-----------



## 7. Judges' Checklist for Pointing (continued)

- **Rarity** = 20 points
  - Rarity = numbers extant vs. scarcity = \$ value
  - Rare items are identified and quantified
  - What % of **Rarity** does each point represent?

0-10	11	12	13	14	15	16	17	18	19	20
-100 to -50%	-45%	-40%	-35%	-30%	-25%	-20%	-15%	-10%	-5%	-0%

## 7. Judges' Checklist for Pointing (continued)

- **Condition** = 10 points
  - Fine condition in context of time period/source/use
  - Damaged or altered items noted
  - What % of **Condition** does each point represent?

0-5	6	7	8	9	10
-100 to -50%	-40%	-30%	-20%	-10%	-0%

## 7. Judges' Checklist for Pointing (continued)

- **Importance = 10 points**
  - Importance to philately, region/country
  - For thematic, topical and display exhibits = all points on exhibit importance
    - Challenge and difficulty in creating exhibit
    - Exhibit's importance to similar exhibits
  - What % of **Importance** does each point represent?

0-5	6	7	8	9	10
-100 to -50%	-40%	-30%	-20%	-10%	-0%

## 7. Judges' Checklist for Pointing (continued )

- Notes at frames and translation to EEF
  - Use EEF or other sheet +/- judges' checklist
  - Point deficiencies should translate directly to suggestions for improvement on EEF and orally
  - All deficient areas need to have meaningful comments
  - Low point areas require more comments than high point areas
  - Be specific
  - Not every criterion needs comments on the EEF

## 8. When to Reconsider?

- Before leaving the frames
  - Briefly look at all borderline exhibits
  - Ensure comparable exhibits are similarly pointed
  - Adjust points as necessary

0-54 Certificate	55-59 Bronze	60-64 S Bronze	65-69 Silver	70-74 LG Silver	75-79 Vermeil	80-84 LG Vermeil	85-89 Gold	90-100 LG Gold
---------------------	-----------------	-------------------	-----------------	--------------------	------------------	---------------------	---------------	-------------------

## 9. Procedures for Judging Using Points

- Chief Judge will determine procedure for the given show
  - Depends on size of show
  - Number of teams
  - Jury calibration on points
  - Order of exhibits
  - Use of first responder to lead frame discussion
  - Conflict resolution
  - Timing
  - Review of EEFs
  - Special award assignments

Questions?  
Group Findings  
and  
Facilitated Discussion

# Wrap up and Knowledge Gained

- If you arrived late and did not sign in, please do so before leaving.